

 JOIN US FOR THE NOVEMBER GENERAL MEETING

**Friday November 7th at 7pm on Zoom**

## About The Metal Arts Academy with Michael R. Kosinski

Dear members and friends of the San Francisco Gem and Mineral Society:  
You are cordially invited to our November 2025 First Friday Meeting on Zoom.

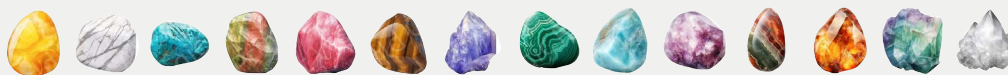
At the age of sixteen, **Michael R. Kosinski** became an apprentice at the Institute of Jewelry Training in Citrus Heights, CA. During the '80s, he apprenticed with Van Craeynest, Inc. in San Francisco. There he learned the fine art of jewelry making based on old world techniques such as forging, toolmaking, carving and chasing. As an apprentice he was given the gift of time and repetition to learn new skills. This is the basis of his early career and it shows throughout his work.

**Metal Arts Academy** was founded in 2017 by Michael and his wife Rebecca. The jewelry program at MAA (in Auburn, CA) includes fabrication, design, stone setting, wax carving, casting, carving, chasing and piercing. The metal arts curriculum includes chasing and repoussé, sculpting, raising, anticlastic, pewtersmithing and coppersmithing. MAA is eager to teach the next generation of craftsmen and women. Metal Arts Academy is always reaching to the past and teaching for the future.

Wherever you are, settle in with a favorite drink or snack and enjoy! After the presentation a general discussion will follow.

**REGISTER IN ADVANCE FOR THIS MEETING:**

<https://us02web.zoom.us/meeting/register/X0CcvuCCRqSgZLLtxa0Vow>



Located on the N-Judah Streetcar Line (stops at 46th) • Clubhouse is between 46th & 47th Avenues in San Francisco

NOTE: There's often more detail about club events on our Facebook page: [www.facebook.com/SFgem.mineral](http://www.facebook.com/SFgem.mineral)

# G

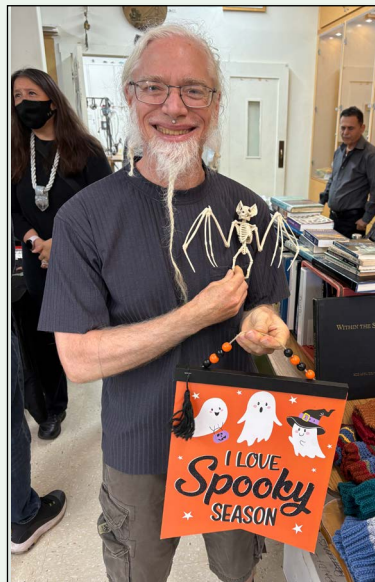


# MINERAL

SAN FRANCISCO GEM & MINERAL SOCIETY, INC. • WWW.SF-GMS.ORG • (415) 564-4230

# Club Scenes: *October Open House & New Member Orientation*

*Photos courtesy of Tony DeLeon*



*Top Row: Rock Detective Parks, Club Member Gayton, Club President Kirk, Member Suki.  
Middle Row: Members Douglas and Debbie; Membership Director Tony and Member Kris, Members Bashir and Kirk.  
Bottom Row: November New Members Orientation, Member Hank, Club Officers Mary Sue and Treasurer Andrew.*



## *Notice from the SFGMS Board to Club Members*

### **Shop Fees and Membership Dues Increasing in January 2026**

*– Tony DeLeon, Membership Secretary, and Andrew Chan, Treasurer  
on behalf of the 2025-26 San Francisco Gem and Mineral Society Board Members.*

The San Francisco Gem and Mineral Society Board met on October 19th and voted to increase shop fees to \$8 effective January 1, 2026. The Board also approved an increase in annual membership dues to \$50 for regular members and \$30 for associate members.

Due to rising operational costs, the Board found it necessary to raise shop fees by \$3 per session. Since the pandemic, the cost of essential supplies such as saw blades, grinding wheels, and cutting oil has continued to rise, making it unsustainable for the club to operate at a loss.

The Board also found it necessary to make an increase of \$20 for regular membership dues and \$10 for associate membership dues. Currently, the California Federation of Mineralogical Societies cost for each member is \$10, which the club pays directly from each member's dues. The Board holds fiduciary responsibility for ensuring the long-term stability of our organization. Building ownership entails ongoing maintenance expenses, including floors, roofing, electrical systems, and other unforeseen costs and the Board must use caution with club funds.

Members who have not submitted payment by December 31, 2025, will be required to pay the new membership fee of \$50, increased from \$30.

To ensure that we can continue operating effectively and meeting the needs of our members, both shop and membership fees will be adjusted beginning January 2026.

- ✓ **Shop Fee: \$8 per session**
- ✓ **Regular Membership: \$50**
- ✓ **Associate Membership: \$30**

The Board has agreed to explore options for members who request assistance with the increased costs. Details will be rolled out at the start of the new year.

# Club Scenes: *Big Sur Jade Festival*

Story and Photos courtesy of Bob Kozak

For the second time **Harmony, CA**, a small community outside of Cambria, hosted the **Big Sur Jade Festival**. The weekend of October 10-12 there were approximately 50 vendors, food purveyors and music that made for good times and enjoyable viewing of plenty of Big Sur Jade; from hand-size pieces to many gorgeous earrings and pendants. There was also jade from Wyoming, Washington State, British Columbia, the Yukon and Guatemala. There were familiar faces like Mike Burkleo, holding

up a wonderful slice of Polar Jade (below), and Jade Diver made a great assortment of pendants decorated with abalone shell. Some club members like Robin Crabill were there, picking up pocket-sized pieces. It was wonderful to see the Jade Community getting together again. There were many great restaurants to choose from and also a scarecrow festival in Cambria. Nearby Hearst Castle offered tours and an opportunity to see zebras and beautiful coastal scenery. Many dealers and visitors said they will be back next year.





# California Events of Interest to Club Members:

## Fresno Gem & Mineral Society

11/22 - 11/23/2025

Hours: Sat 10:00-5:00 Sun 10:00-4:00

Venue: Elks Lodge, 5351 North Diana St.,  
Elks Lodge, Fresno, CA

<https://fgms.rocks>

## El Cajon Valley Rock Round Up

11/22 - 11/23/2025

Hours: Sat 9:00-5:00 Sun 9:00-4:00

Venue: Lakeside Rodeo Arena Rodeo, 12584 Mapleview St.,  
Lakeside Rodeo Arena Rodeo, Lakeside, CA

<https://www.ecvgms.org>

## Winter San Francisco Crystal Fair

11/29 - 11/30/2025

Hours: Sat 10:00-6:00 Sun 10:00-4:00

Venue: San Francisco County Fair Bldg., 1199 9th Ave - Golden Gate Park  
San Francisco County Fair Building, San Francisco, CA

<http://www.crystalfair.com>

## Mojave Desert Gem & Mineral Show

12/06 - 12/07/2025

Hours: 10:00 - 5:00

Venue: The Harvey House, 681 N 1st Ave.  
The Harvey House, Barstow, CA

<http://www.mdgms.net>

## Antioch Lapidary Club Jewelry, Gem & Rock Show

2/21 - 2/22/2026

Venue: Contra Costa County Fairgrounds  
1201 West 10th Street, Contra Costa County Fairgrounds,  
Antioch, CA

<http://www.antiochlapidaryclub.com>

## East Bay Mineral and Lapidary Club Show

2/28 - 3/1/2026

Venue: The Newark Pavilion, 6430 Thornton Ave.,  
Newark, CA 94569

Hours: Sat 10 - 6 PM, Sun 10 - 5 PM

Exhibits, Educational Presentations, Demonstrations, Gem ID,  
Kids' Spinning Wheel, Door Prizes, Geode Splitting, Live Auction. \$8

Admission, Kids 12 & under Free; Seniors 65+

Free on Sunday, March 1

Contact: (510)353-3787, info@ebml.club

<http://ebml.club>

## Joshua Tree Gem & Mineral Show

4/1 - 4/5/2026

Hours: Wed-Sat 9:00-5:00 Sun 9:00-4:00

Venue: Joshua Tree Lake RV & Campground  
2601 Sunfair Rd., Joshua Tree Lake RV & Campground,  
Joshua Tree, CA

<https://www.facebook.com/groups/1620716395007100>

## SPECIAL ON-GOING CLASS ANNOUNCEMENT:

🌀 *New and Continuing Members are asked to attend* 🌀

# “Club Introduction 101” Essential Shop Skills & Safety

**4th Monday Every Month; 7-10 pm**

**\*\*\* NEXT CLASS NOVEMBER 24TH \*\*\***

**Get a basic introduction. Learn what is required to use the shop and review shop rules.**

## WEEKLY CLUBHOUSE SCHEDULE

PLEASE BE SURE TO CALL THE CLUBHOUSE (415-564-4230) BEFORE TRAVELING.

Sunday	Monday	Tuesday	Wednesday	Thursday	Friday	Saturday
10 AM - 3 PM Lapidary, Silversmithing	9 AM - 1 PM Silversmithing Lapidary	9 AM - 5 PM Silversmithing	9 AM - Noon Lapidary	10 AM - 3 PM Spheremaking	Noon - 4PM Lapidary, Silversmithing	10 AM - 5 PM Lapidary, Silversmithing, Spheremaking
	6 PM - 9 PM Lapidary	9 AM - 3 PM Lapidary	6 PM - 9 PM Lapidary, Faceting	3 PM - 6 PM Goldsmithing		
		7 PM - 10 PM Lapidary		6 PM - 9 PM Gem Carving		

### SPECIAL DATES IN NOVEMBER

-  **First Friday Meeting on Zoom**  
Featuring Michael R. Kosinski • Nov 7th, Friday • 7:00 pm

---

  -  **In-Person Instructors Meeting at the Clubhouse with Zoom Option** • Nov 8th, Saturday • 11:00 am - Noon

---

  -  **Board Meeting at the Clubhouse with Zoom Option**  
Nov 8th, Saturday • 12:30 pm - 1:00 pm  
*\*Zoom -Info: [tonythetm@aol.com](mailto:tonythetm@aol.com)*

---

  -  **Mineralog Dec 2025 Submissions Deadline**  
Nov 19th, Wednesday • 5:00 pm

---

  -  **SF Gem & Mineral Society Club Fair & Open House**  
Nov 22nd, Saturday • 11:00 am - 3:00 pm  
*Contact Tony to reserve a spot: [tonythetm@aol.com](mailto:tonythetm@aol.com)*

---

  -  **New Member Orientation**  
Nov 24th, Monday • 7:00 pm
- Annual Club Holiday Party at the Clubhouse**  
**Dec 13th - 4:00 - 8:00 pm**
- Club Open House • Dec 14th - 11:00 am - 3:00 pm**



### CLUB BIRTHDAYS IN NOVEMBER

*Note: Exact birth "DATES" are not shared to protect privacy.*

- |                                                                                                                                                                                                                                                                                                                                                                                                                                                                                                                                                                                                                                                                                                                                                                                                                            |                                                                                                                                                                                                                                                                                                                                                                                                                                                                                                                                                                                                                                                                                                                                                                |
|----------------------------------------------------------------------------------------------------------------------------------------------------------------------------------------------------------------------------------------------------------------------------------------------------------------------------------------------------------------------------------------------------------------------------------------------------------------------------------------------------------------------------------------------------------------------------------------------------------------------------------------------------------------------------------------------------------------------------------------------------------------------------------------------------------------------------|----------------------------------------------------------------------------------------------------------------------------------------------------------------------------------------------------------------------------------------------------------------------------------------------------------------------------------------------------------------------------------------------------------------------------------------------------------------------------------------------------------------------------------------------------------------------------------------------------------------------------------------------------------------------------------------------------------------------------------------------------------------|
| <ul style="list-style-type: none"> <li>Aaron Del Rosario</li> <li>Aaron Jui Lee</li> <li>Ali Rappaport</li> <li>Annie Edinger</li> <li>Barbara Hockman</li> <li>Barbara Misthos</li> <li>Briana Schweizer</li> <li>Chris Miller</li> <li>Chris Osborne</li> <li>Christina White</li> <li>Christopher DeWinter</li> <li>Collette Weis</li> <li>Colton Johnson</li> <li>Cort Benningfield</li> <li>Dana Santos</li> <li>Dylan Mooney</li> <li>Eugenio De Hostos</li> <li>Gerson Finlev</li> <li>Gregory Edwards</li> <li>Helen Tran</li> <li>Helene Park</li> <li>Henry Jason, Jr.</li> <li>Jill Ellenfsen</li> <li>Joaquin Alves</li> <li>Julie Martin</li> <li>Julie Romanosky</li> <li>Kang-Min (Maurice) Chang</li> <li>Kelsey Guarino</li> <li>Kristin Tanner</li> <li>Kurt Kurzenhauser</li> <li>Laura Blue</li> </ul> | <ul style="list-style-type: none"> <li>Leigh Toth</li> <li>Li Liu</li> <li>Lola Pettit</li> <li>Madison Carter</li> <li>Marcus Missirlian</li> <li>Mary Blonkenfeld</li> <li>Matt Lesniewski</li> <li>Matthew Goldklang</li> <li>Michael McFarlin</li> <li>Miguel Navarrete</li> <li>Mike Welsh</li> <li>Mira Malon</li> <li>Missirlian Marcus</li> <li>Nadine Samorand</li> <li>Nick Kucera</li> <li>Nickiaus Walker</li> <li>Richard Bonderud</li> <li>Rodney Miyatake</li> <li>Roman Mikulinsky</li> <li>Ross Macleod</li> <li>Ruth Mehrwein</li> <li>Sara Gore</li> <li>Seth Gold</li> <li>Seth Lerer</li> <li>Sheri Barkowski</li> <li>Si-On Nguyen</li> <li>Solly Taylor</li> <li>Stephen Watry</li> <li>Susan Platania</li> <li>W. Curry III</li> </ul> |
|----------------------------------------------------------------------------------------------------------------------------------------------------------------------------------------------------------------------------------------------------------------------------------------------------------------------------------------------------------------------------------------------------------------------------------------------------------------------------------------------------------------------------------------------------------------------------------------------------------------------------------------------------------------------------------------------------------------------------------------------------------------------------------------------------------------------------|----------------------------------------------------------------------------------------------------------------------------------------------------------------------------------------------------------------------------------------------------------------------------------------------------------------------------------------------------------------------------------------------------------------------------------------------------------------------------------------------------------------------------------------------------------------------------------------------------------------------------------------------------------------------------------------------------------------------------------------------------------------|

## WE WELCOME 4 NEW MEMBERS FROM OCTOBER!

- Jasmine Chung
- Gregory Wesolowski
- Nickiaus Walker
- Scott Wald



## 2025 BOARD OF DIRECTORS AND COMMITTEE CHAIRPERSONS

### OFFICERS

<i>President</i>	Kirk Kwiatkowski	<a href="mailto:handsofglass33@gmail.com">handsofglass33@gmail.com</a>	
<i>Vice President</i>	Bob Kozak	<a href="mailto:topaz00805@comcast.net">topaz00805@comcast.net</a>	650-554-0251
<i>Treasurer</i>	Andrew Chan	<a href="mailto:achan123@yahoo.com">achan123@yahoo.com</a>	
<i>Recording Secretary</i>	Mary Sue Bucher	<a href="mailto:midnightcloud@hotmail.com">midnightcloud@hotmail.com</a>	
<i>Corresponding Secretary</i>	David Zandman	<a href="mailto:davidzandman@gmail.com">davidzandman@gmail.com</a>	
<i>Membership Secretary</i>	Tony DeLeon	<a href="mailto:tonythetm@aol.com">tonythetm@aol.com</a>	415-624-7576
<i>Museum Curator</i>	Geno De Hostos	<a href="mailto:hostos@pacbell.net">hostos@pacbell.net</a>	415-244-1965
<i>Entertainment Director</i>	Robert Courtney	<a href="mailto:exlibrys13@yahoo.com">exlibrys13@yahoo.com</a>	
<i>Librarian</i>	Mariana Photiou	<a href="mailto:parathiraki@gmail.com">parathiraki@gmail.com</a>	415-712-2997



### DIRECTORS ON THE BOARD

Joe Dempsey	<a href="mailto:dempseygategems@live.com">dempseygategems@live.com</a>	415-731-2701
Mike Welsh	<a href="mailto:easyestimate@gmail.com">easyestimate@gmail.com</a>	
Trevor McLaughlin	<a href="mailto:trevormclaughlin9@gmail.com">trevormclaughlin9@gmail.com</a>	
Elizabeth Lopez	<a href="mailto:lopezelsf@gmail.com">lopezelsf@gmail.com</a>	
Robert Courtney	<a href="mailto:exlibrys13@yahoo.com">exlibrys13@yahoo.com</a>	
Amanda Ganong	<a href="mailto:amandaganong@gmail.com">amandaganong@gmail.com</a>	
Christopher DeWinter	<a href="mailto:cdewinter@yahoo.com">cdewinter@yahoo.com</a>	

### OPERATIONAL COMMITTEES

<i>Donations</i>	Joe Dempsey	<a href="mailto:dempseygategems@live.com">dempseygategems@live.com</a>	415-731-2701
<i>Donations</i>	Bob Kozak	<a href="mailto:topaz00805@comcast.net">topaz00805@comcast.net</a>	650-554-0251
<i>Federation Liaison</i>	Dylan Mooney	<a href="mailto:djmooney@sfsu.edu">djmooney@sfsu.edu</a>	415-308-8271
<i>Field Trip Chair</i>	Stan Bogosian	<a href="mailto:sbogosian@aol.com">sbogosian@aol.com</a>	408-568-2489
<i>Faceting Instructor</i>	Kirk Kwiatkowski	<a href="mailto:handsofglass33@gmail.com">handsofglass33@gmail.com</a>	
<i>Mineralog Editor</i>	Christopher DeWinter	<a href="mailto:mineralog@protonmail.com">mineralog@protonmail.com</a>	
<i>Mining Property</i>	Steve Watry	<a href="mailto:swatry@comcast.net">swatry@comcast.net</a>	
<i>Purchasing</i>	Steve Watry	<a href="mailto:swatry@comcast.net">swatry@comcast.net</a>	
<i>Safety</i>	Bob Kozak	<a href="mailto:topaz00805@comcast.net">topaz00805@comcast.net</a>	650-554-0251
<i>Shop Foreman</i>	Open		
<i>Show Committee Chair</i>	Tony DeLeon	<a href="mailto:tonythetm@aol.com">tonythetm@aol.com</a>	415-624-7576
<i>Website</i>	Christopher DeWinter	<a href="mailto:mineralog@protonmail.com">mineralog@protonmail.com</a>	

### THE MINERALOG STAFF

<i>Copy Editor/Proofreader</i>	Robin Crabill	<a href="mailto:recses@comcast.net">recses@comcast.net</a>	415-233-1860
<i>Editing/Calendar</i>	Christopher DeWinter	<a href="mailto:mineralog@protonmail.com">mineralog@protonmail.com</a>	

## THE MINERALOG

We are always grateful for editorial and photographic submissions, especially from our members.

To contribute content, submit story or calendar additions, updates or corrections, please email the Editor:  
[mineralog@protonmail.com](mailto:mineralog@protonmail.com)

Deadline for **December** Mineralog is 5:00 PM **Wednesday, Nov. 15th**

Any submissions or changes received after the deadline will automatically be included in the following month's Mineralog.

Original material published in the Mineralog that is not copyrighted may be reprinted with all due and proper credits.

For Membership Info, contact the Membership Secretary:  
[tonythetm@aol.com](mailto:tonythetm@aol.com)

## SAN FRANCISCO GEM & MINERAL SOCIETY, INC.

4134 Judah Street, San Francisco, CA 94122-1125

415-564-4230 • [WWW.SF-GMS.ORG](http://WWW.SF-GMS.ORG)

**Membership Activities Include:**

**Earth Sciences, Lapidary, Field Trips, Collecting, Jewelry Making, Classes**

*An Educational Non-Profit Organization Founded in 1935*

*Member, California Federation of Mineralogical Societies and American Federation of Mineralogical Societies*